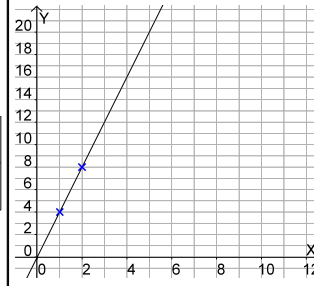


START

x	0	1	2	3	4	5
y	0	4	8	12	16	20

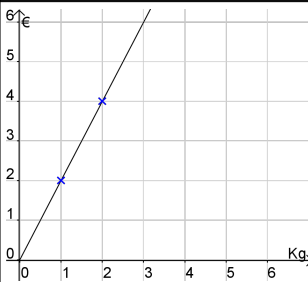
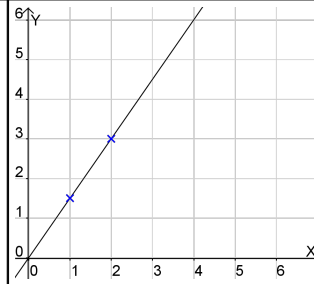


3 kg Pflaumen
kosten 9,- €

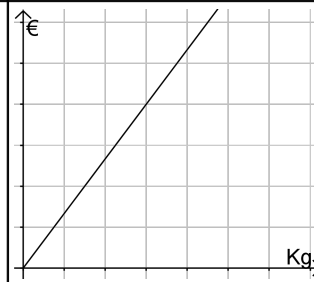
kg	1	2	3	4	5	6
€	3	6	9	12	15	18

Der
Proportionalitäts-
faktor ist

$$\frac{3}{2} = 1,5$$

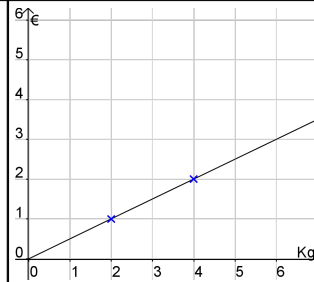


Gewicht → Preis



$$y = \frac{1}{4} \cdot x$$

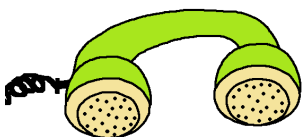
x	1	4	5
y	0,25	1	1,25



Min.	1	2	10
€	0,09	0,18	0,90

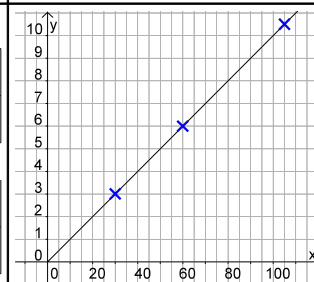
x	3	6	2
y	0,75	1,5	0,5

15	20	60
1,35	1,80	5,40

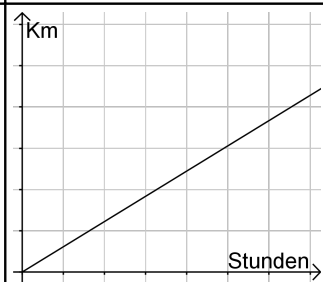


9 Cent
pro Minute in alle
deutschen Netze!!!

x	30	45	60
y	3	4,5	6



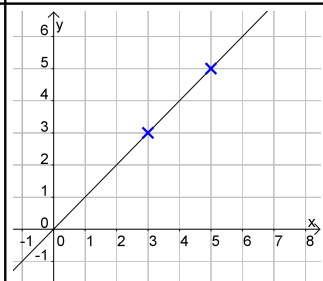
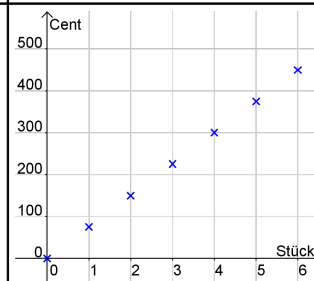
x	75	90	105
y	7,5	9	10,5



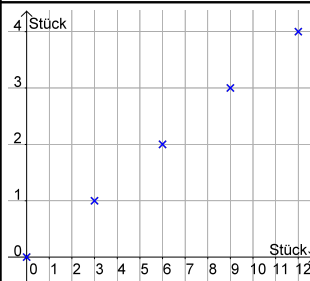
Zeit → Entfernung



Ein Minitörtchen
kostet 75 Cent.



$$y = 1 \cdot x$$



Aus drei Orangen
kann man genug
Saft für ein Glas
pressen.

ZIEL

